



DISMOUNTED SYSTEMS

## MSS II Mini See Spot II

Leverage the Benefits of precision munitions technology

Long range reconnaissance, superior image quality, true imaging laser see spot and handheld portability are the underlying characteristics of the Mini See Spot II (MSS II) thermal imager from Leonardo DRS. The MSS II employs micro-cooler mid-wave infrared technology to create a large-format image of 640 x 480 pixels with a marker/designator (1.064 micron) laser see spot inherent in the sensor. Ideal for extended range target detection and identification, the MSS II weighs less than two pounds, including its six hot-swappable batteries extending system operation without having to power down during battery change, enabling persistent surveillance. Handheld, mounted to a laser designator/marker source, or tripod mounted, the MSS II can also be powered from an external power source.

The MSS II supports the mounted and dismounted FIRES mission day or night with clarity of image, and laser spot confirmation on target in a completely passive mode (no illumination or artificial lighting sources required).



 **LEONARDO DRS**

## OUR TECHNOLOGY

Leonardo DRS is a leader in the design and manufacture of thermal weapon sights, focusing on producing high quality, reliable, and cutting edge products to give the dismounted warfighter overmatch capability on the battlefield. Our family of thermal weapon sights are currently satisfying mission requirements around the globe.

## FEATURES

- See Battlefield Laser Markers / Designators directly on image
- Rapidly ID, acquire and engage targets completely passive. Supports both analog or digital displays
- Handheld, laser mounted and aligned or tripod mounted
- Image through degraded battlefield and weather conditions
- Reduce fratricide and collateral damage with target ID and spot confirmation

## FOCAL PLANE ARRAY

Component	Description
Detector Type	HgCdTe
Array Size	640 x 480
Detector Pitch	12 $\mu$ m
Spectral Response	3.7–5 $\mu$ m

## VIDEO

Frame Rate	$\leq$ 60 Hz
Format	VGA/USB
Gain/Level Control	AGC/Manual Gain & Level Control
Image Polarity	White Hot/Black Hot

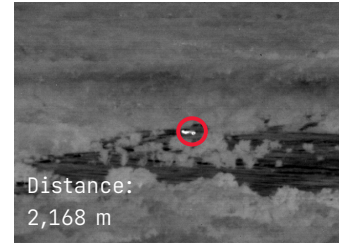
## MECHANICAL

Dimensions (L x W x H)	20.4 x 9.8 x 9.83 cm w/o eyecup 24 x 9.80 x 9.83 cm with eyecup
Weight	<1.08 kg (<2.4lbs)
Mounting	1/4-20 Standard Tripod Mount or MIL-STD-1913 Rail

The information in this data sheet is to the best of our knowledge, accurate as of the date of issue. Leonardo DRS, Inc. reserves the right to change this information without notice. Nothing herein shall be deemed to create any warranty, expressed or implied. Export of the commodities described herein is strictly prohibited without a valid export license issued by the U.S. Department of State, Directorate of Defense Trade Controls, prescribed in the International Traffic in Arms Regulations (ITAR), Title 22, Code of Federal Regulation, Parts 120-130.

Copyright © Leonardo DRS, Inc. 2024 All Rights Reserved.

[LeonardoDRS.com/MiniSeeSpotII](http://LeonardoDRS.com/MiniSeeSpotII)



## ELECTRICAL

Component	Description
Power Source	Six-3.0 VDC Lithium Batteries
External Power	12.0–35 VDC
Operational Time	> 4.0hrs (6 DL-123)
Start-up Time	2.5 min at ambient temp

## ENVIRONMENTAL

Operating Temperature	-20°C to +50°C
Storage Temperature	-40°C to +70°C
Immersible	1m for two hours

## PERFORMANCE

Focus Range	Variable (20m to infinity)
Field of View	4.1° x 3.2°
EZoom	2X, 4X
Compass Accuracy	$\pm$ 10° C magnetic North ( $\pm$ 2° typical)
Compass Sensing	Tilt compensated azimuth
Audible Noise	< 40 dB (1 meter)
Operating Modes	On or Standby
Output/Connectors	USB Video/RS-232/Ext Power Input

